

Battery Chargers, Inverters & Accessories



Dolphin
premium

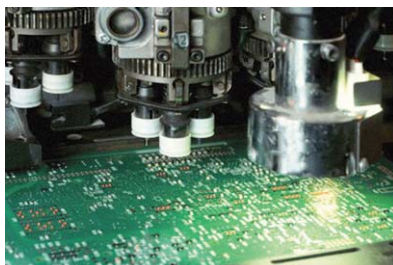
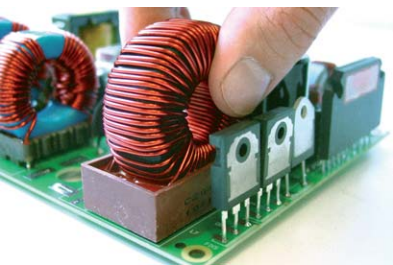
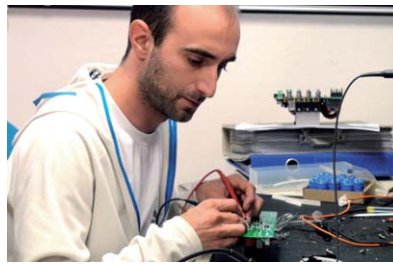


Dolphin
pro

Why choose a Dolphin Charger?

Since their launch in 1995, Dolphin Battery Chargers have consistently proven themselves market leaders. **Dolphin 1** - 1995 to 2001 - was technologically advanced for its time. When **Dolphin 2** was launched - 2001 to 2009 - an emphasis was placed on the design of the product. **Dolphin Premium & Pro** - since 2010 - are products without compromise. They are efficient, robust and cost conscious.

From 1995 - 2008, Dolphin Battery Chargers were manufactured by PowerFirst. In 2008, PowerFirst was bought by MDP, specialists in research, development and manufacture of electronic products. MDP is based in Annecy in eastern France; part of the production process is subcontracted to cost efficient countries thus ensuring that Dolphin Battery Chargers will remain price competitive as well as technologically advanced in the years to come.



- ☞ An ISO 9001 certified Research & Development facility in France with a specialized team of electronic engineers
- ☞ Specialized subcontractors keeping production costs to a minimum
- ☞ A rigorous quality control department, testing every product before it leaves the factory
- ☞ Up to date technology

- ☞ A dedicated after sales service
- ☞ Sales to date of over 100,000 units, on every Continent
- ☞ An international network of distributors and service points

How to choose the right Dolphin Charger for your boat

Dolphin
charger

Dolphin **Dolphin**
premium pro

12 volt 24 Volt 24 Volt
10 15 25 40 60 80 20 30 50 80 100 120 160

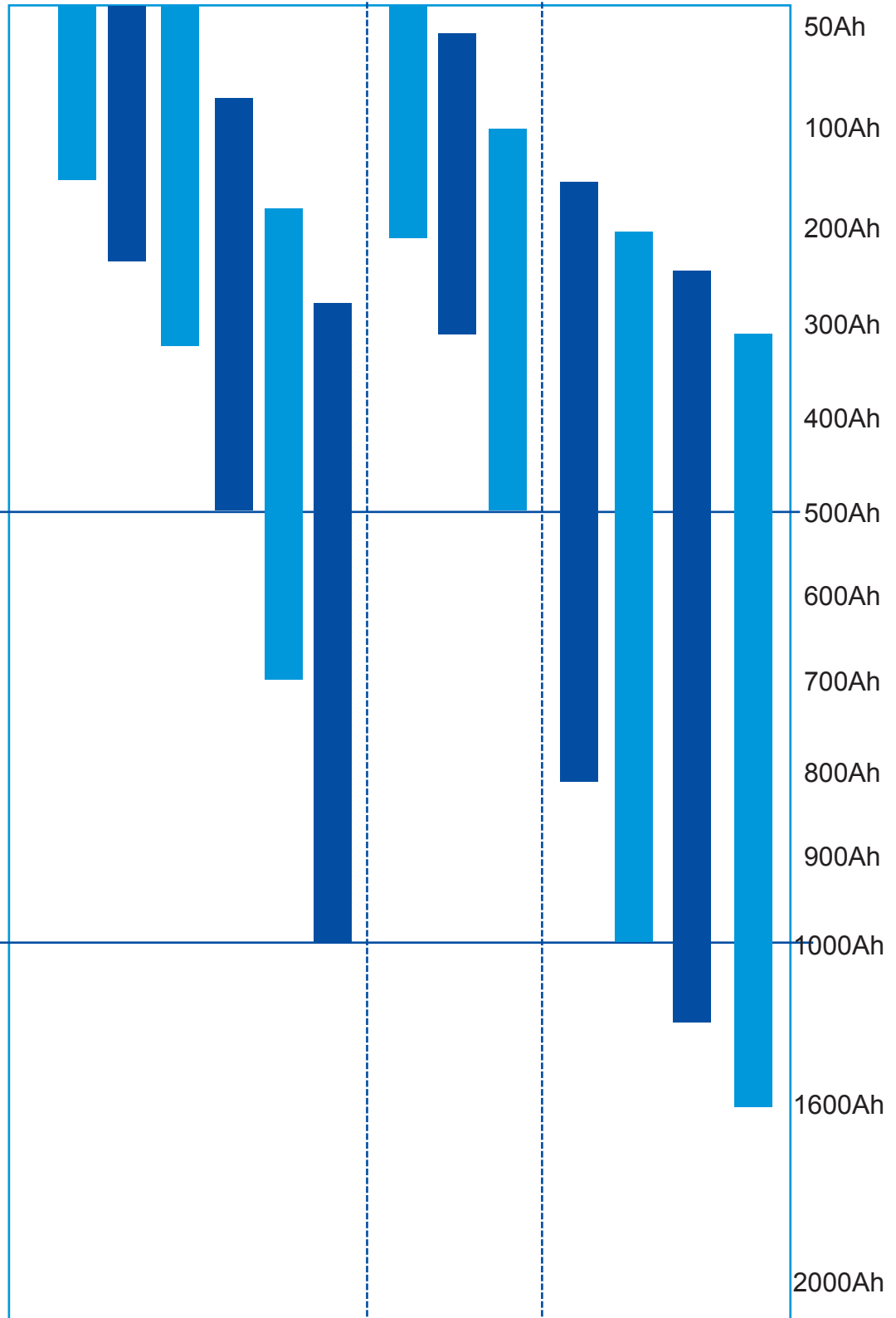
Coastal yachting



Off Shore yachting



Super Yachting



Battery Charger

We recommend a charging rate to a maximum of 20% of the amp hour capacity of the battery.
E.g. the charger for a 300Ah battery is maximum 60amps.

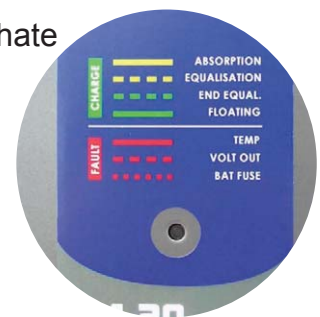


12V



24V

- 🌀 New robust and compact casing
- 🌀 3 completely isolated battery outputs
- 🌀 Thanks to the Winsta (Wago) and Phoenix contact connectors wiring & connection is easy - user friendly.
- 🌀 Digital management with up to date RISC microcontroller
- 🌀 4 Charging programmes including one for Lithium-Ion-Iron-Phosphate with integrated BMS.
- 🌀 Charging programme selection by internal dip switch
- 🌀 Automatic weekly Equalisation for all charging programmes
- 🌀 Automatic 115/230V switchover - 12V25A, 12V40A & 24V20A only.
- 🌀 Night mode (Silent - without fan) - 12V25A, 12V40A & 24V20A only.



PREMIUM BATTERY CHARGERS

12V & 24V

12V10A

12V15A

12V25A

12V40A

24V20A

Input

Input Voltage <i>115V available on request</i>	230V (+/-15%) Automatic Switchover		115V/230V (+/-15%)	
Frequency	50Hz/60Hz (+/-10%)		50Hz/60Hz (+/-10%)	
Cos	0.6 typ.		0.9 typ.	
Efficiency	80% typ.		80% typ.	
Max. current- 115V/230V	NA/1.3A	NA/1.9A	4A/2A	7A/3.5A
Fuse	T2A 250V 5x20mm	T3,15A 250V 5x20mm	T6A 250V 5x20mm	T10A 250V 5x20mm

Output

Number of outputs	3 isolated outputs			
Number of charging curves	4 programmes, position selected by DIP Switch NEW - One of which is LiFeSO4 with integrated BMS			
Charging curve	IUUo + weekly automatic equalisation			
Weekly equalisation	Automatic +/-2%		Automatic +/-2%	
Voltage share	< 1% pp (BW < 20MHz)			
Ripple	F15A 32V	F20A 32V	2xF15A 32V	2xF25A 32V
Fuse	Automotive (mini)	Automotive (mini)	Automotive (mini)	Automotive (mini)
	In case of output overload Excessive internal temperature Charging voltage too high Reverse battery polarity (fuse)			
Display	Tricolour Led			
Night / Silent mode	By button			
Operating temperature	-10°C to +50°C			
Storage temperature	-20°C to +70°C			
Humidity	10% to 90% (without condensation)			
Ventilation	Natural		Forced fan cooling	
Security	EN60335-2-29 (2002)			
Housing	Powder coated aluminium			
Mounting	2 screws 4mm			
Dimensions (DxWxHmm)	96x120x238			
Weight (kg)	1.30			
Input terminals	20A 230V, 4mm ² max. Ref.: 770.813/G11-000 (WINSTA - WAGO)			
Battery terminals	40A 630V, 10mm ² max. Ref.: PC 6-16/4-G1F-10,16 (PHOENIX CONTACT)			

Code	399000	399010	399020	399030	399040
-------------	---------------	---------------	---------------	---------------	---------------

DOLPHIN PRO is a compact and powerful marine battery charger.

NEW in 2012



✔ Whatever your charging needs, the Dolphin Pro range of battery chargers has a model **adapted** to you.

✔ A natural **evolution** of the Dolphin 2 range; the Dolphin Pro has an internal diode isolator without voltage drop.



✔ **User friendly design:** a solid casing in aluminium; mounting by 4 easily accessible screws; a front cover allowing easy access to the charge selector and the wiring connections (4 solid M8 terminals for the battery outputs); a cable gland for the input cable and a cable grommet with a waterproof seal.



✔ **Integrated Control Panel:** LED display indicating the charging curve; boost, absorption, floating as well as anomalies and faults: temperature, voltage, fuses...

✔ **Automatic switchover:** equipped with 3 isolated outputs, automatic switchover 115V / 230V, 50Hz / 60Hz, 9 charging programmes (including 2 winterizing and 1 power supply) depending on battery type, makes this charger suitable for all charging needs.



✔ **Optional extras:** Remote control panel, connection by RJ45 and a battery temperature sensor allowing a charging level adjustment.

DOLPHIN PRO BATTERY CHARGERS (12V & 24V)



	12V65A	12V85A	24V40A	24V60A	24V100A
Input					
Input Voltage	115V/230V (+/-15%) Automatic Switchover		115V/230V (+/-15%) Automatic Switchover		230V
Frequency	50Hz/60Hz (+/-10%)		50Hz/60Hz (+/-10%)		
Cos	0.6 typ.		0.9 typ.		
Efficiency	80% typ.		80% typ.		
Max current 115V/230V	11A/5.5A	7.5A/15A	12.6A/6.3A	19.6A/9.8A	16A
Output					
Number of outputs	3 isolated outputs				
Number of charging curves	9 programmes, choice of programme by dip-switch 00 - Liquid Lead Acid batteries (open) 01 - Sealed Lead batteries 02 - Lead Calcium batteries 03 - "Delphi" batteries 04 - "Optima" Batteries 05 - Winterizing Lead batteries (open) 06 - Winterizing Sealed Lead batteries 07 - Batteries Lead Acid & AGM 08 - Power Supply				
Charging curve	IUUo 4 modes				
Voltage share	+/-2%				
Ripple	< 1%				
Communication	Internal RJ45 with remote control panel				
	Against: output overload Output over-voltage Excessive internal temperature Reverse battery polarity (fuse)				
Display	LED display				
Operating / storage temperature	-10°C to +50°C / -20°C to +70°C				
Humidity	10% to 90% (without condensation)				
Ventilation	Forced fan cooling EN60335-1				
Security	Emission EN50081-1, Immunity EN50082-1, EN61000-3-2				
EMC	Powder coated aluminium and composites materials (LED display)				
Housing	IP20				
Protection rating	Wall mounted - 4 x M4 screws				
Mounting					
Dimensions (W x H x D mm)	336,5x350x118			336,5x350x173	
Weight (kg)	6,00			9,00	
DC Connection	4 M8 terminals				
AC Connection	4mm terminals, M6 bolt for ground				
Battery temperature sensor	Screw terminal				
Remote panel	By internal plug RJ45: LED display				
Paralleling	With the same type of charger				
Code	399140	399150	399160	399170	399180

WATERPROOF BATTERY CHARGER



Automatic Battery Charger Waterproof and shock resistant (IP65)

Nothing can damage this charger, not water, hydrocarbons or impurities. The housing is aluminium and the electronics are coated in resin.

Thermal protection

This battery charger can even be used in warmer areas of the boat like the machine room. The higher the ambient temperature, the lower the power output (60°C+) but not even this will damage the charger.

Automatic charger with 3 charging curves - IUoU

The battery is protected against all overloads and can remain permanently connected (operating in floating).

Model	12 Volts - 7 Amps	12 Volts - 17 Amps
Code	498000	498100
Battery capacity	18 - 80 Ah	20 - 180 Ah
Input voltage	170 - 270 VAC	170 - 270 VAC
Input frequency	40 - 60 Hz	40 - 60 Hz
Number of outputs	1	1
Output voltage	14.4 / 13.8 VDC	14.4 / 13.8 VDC
Charging curve	IUoU	IUoU
Fuse (supplied)	6.3 / 10 Amps	6.3 / 20 Amps
Short circuit	Yes	Yes
Reverse polarity	Yes (fuse)	Yes (fuse)
Temperature fault	Signalled by flashing LED	Signalled by flashing LED
Operating temperature	-30 to +55°C	-30 to +55°C
Ventilation	natural	natural
Humidity	up to 100%	up to 100%
Number of LEDs	2 (1 yellow + 1 green)	3 (1 yellow + 2 green)
LED (operation)	Boost / floating	Boost / floating
LED (alarm)	Reverse polarity - battery voltage too low - high temperature	
Protection level	IP65 (Electronics immersed in resin)	
Material	Aluminium casing	
Colour	Grey	
Dimensions (LxWxH)	155 x 80 x 43 mm	192 x 98 x 47 mm
Weight	1.1 Kg	1.4 Kg
Gauge	3 x 0.75 mm ² x 1.5m long - with EU rated plugs 2P+T	
Battery Cable	1 x 1.5 mm ² x 1.5m long	1 x 1.25mm ² x 1.5m long
Security - emissions	EN 60335-1 / EN 60335-2-29 / EN 55014 / EN 60555-2 / EN 60555-3 EN 55022 Cl.B / EN 61000-3-2 / EN 61000-3-3 / EN 61000-4-2 EN 61000-4-11 / e-marking 95-54-EG	

ALL IN ONE 12V BATTERY CHARGER & ELECTRICAL CABINET IN ONE BOX

AllInOne

Part of the *Dolphin* family
charger

Electrical cabinet

This new concept combines AC circuit protection with a battery charger.

The AC circuit protection includes a residual current device (RCD**) and 2 miniature circuit breakers (MCB).

The battery charger is an IUoU charging curve switch mode type with 3 outputs for engine and service batteries.

 **GFCI - Ground fault circuit interrupter

➤ In today's high tech world, more and more people need a compact and efficient source of electrical power on small craft. **REYA** has developed an innovative "All-in-One" unit which combines an AC distribution system with a 12V switch mode battery charger, all in the same compact box.

➤ **AC circuit protection is by means of a 30 mA, 16 amp R.C.C.B. unit.** Two AC loads can be connected, each with its own 10 amp double pole circuit breaker.

➤ **The battery charging function is identical to that of the standard Dolphin Battery Charger.**

➤ The "All-in-One" units are available in **2 different models**, 15amp or 20amp. Both have 3 outlets to provide charging for 3 separate banks if required.



Model:	15 amp	20 amp
Voltage:	12 V	12 V
Charger outputs:	3	3
Charge:	15A	20A
Charging characteristics:	IUoU	IUoU



Norm

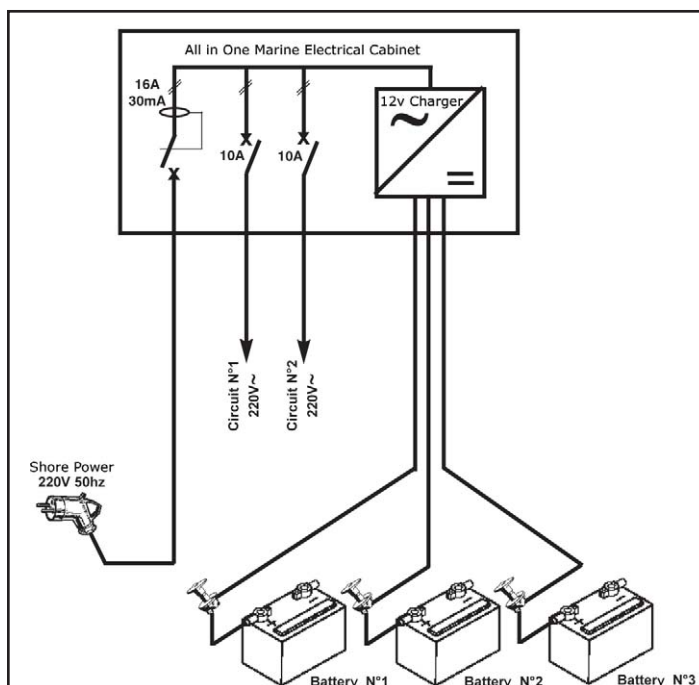
ISO 13297 (electrical systems-Alternating current installations)

3.7.5 Main supply circuits

A manually reset trip free double-pole circuit breaker shall be installed in conductors to the main power supply circuits.

3.8 Earth leakage protection / Ground fault protection

3.8.2 The main supply circuit shall be equipped with a double-pole RCD breaker having a maximum nominal trip sensitivity of 30 mA (this value is for quick tripping and protection against personal shock) and 100 milliseconds maximum trip time.



Weight & Dimensions

12V 15amps	ALLINONE1215	299815	2.1kg & 265x280x110mm
12V 20amps	ALLINONE1220	299820	2.1kg & 265x280x110mm

➤ The unit conforms to the latest ISO 13297 regulations.

LED Display for Programming
& Monitoring Functions

Latest SMD electronic
construction Technology

Switch mode techno-
logy and three stage
charging design with
Power Supply

Temperature sensor for
battery compensation

Modern lightweight
and compact design
with white aluminum
powder coated casing

4 screw simple install
with easy access
removable panel



All Dolphin Battery Chargers and
accessories are **CE** marked

And manufactured to
and ABYC specifications



Universal AC input with
automatic voltage
115/230 VAC 50/60
censoring.

Program selector switch
including winterizing and 6
battery types

Internal connection
for LED remote panel

3 independent
DC outputs

ISO 9002 certified
manufacturing plant

Clearly indicated DC
access terminals with
an individual terminal
for each output



3 year warranty

SMART BATTERY CHARGERS (12V) TECHNICAL DETAILS

Dolphin
charger

Model	60	80
-------	----	----

Codes	299711	299708
Battery Capacity	→700Ah	→1000Ah

Input

Input voltage	115 VAC or 230 VAC	
Input voltage range	98 VAC - 130 VAC or 195 VAC - 265 VAC	
Changeover 115/230	Automatic	
Frequency	45 Hz to 65 Hz	
Harmonics	According to IEC 1000-3-2 or EN 61000-3-2	
Maximum current 115 VAC	10 A	14 A
230 VAC	5 A	7 A
Power factor	> 0.9	
Efficiency	80% typ.	
Power rating	980 W	1300 W
Active Power	1100 VA	1450 VA
Fuse	T15A	T15A

Output

DC output	3 isolated	
Charging characteristic	10 charging programs	
Temp. compensation	+/- 15 mV / °C optional external sensor (optional sensor)	
Voltage share	+/- 2%	
Ripple	< 1%	
Max current	60 A (+/- 10%)	80 A (+/- 10%)
Fuses	3 x F30A	4 x F30A

Protection

Output circuit	Overload, short-circuit, reversed polarity, over voltage
Over temperature	Built-in sensor, battery sensor
General failure	Fuse

Display

LED display	5 LEDs
Remote control panel	Optional
Push-button	Absorption

Control	Microprocessor based RISC technology
Topology	Forward 50 KHz + built-in PFC
EMC	Emission: EN 50081-1, immunity: EN 50082-1
Safety	EN 60335-1
Operating temperature	0°C to +50°C / 32°F to 122°F
Storage temperature	-20°C to +70°C / -4°F to 158°F
Enclosure	IP22
Casing	White aluminium with powder coating treatment
Ventilation	Forced fan cooling
Fan speed	50% or 100% depending on internal temperature
Mounting	Wall mounting - 4 screws M4
Humidity	10% to 90% RH non-condensing

AC2 x 4.0 mm ² terminal blocks		
Batteries	M8 Bolts	M8 Bolts
Temperature sensor - terminal blocks	2 x 1.0 mm ²	2 x 1.0 mm ²
Weight (kg)	5	5
Dimensions (mm)	330x350x120	330x350x120



Display unit

Part Number	299037
Description	Remote control panel for Dolphin battery chargers 5m cable as standard
Reference	REMOTE BC2



Models	24V 30A	24V 50A	24V 80A	24V100A
	299712	299714	299716	299717 299539
Built in alarm:				
Battery capacity	→ 500 Ah	→ 800 Ah	→ 800 Ah	→ 1000 Ah
Input:				
Input voltage	115V/230V ± 15%			230V ± 15%
Frequency	50/60 Hz ± 10%			
Switchover 115V/230V	Automatic			NA
Cos phi	0.9 typ.			0.6 typ
Efficiency	>80%			
Max current 115/230V	5A / 10A	8A / 16A	26A / 13A	16A
Max Power Rating	980 W	1630 W	2700 W	3400 W
Active power	1100 VA	1850 VA	3000 VA	3800 VA
Fuse	T15A 6.3x32	T20A 6.3x32	2 x 20A	2 x 20A
Output :				
Isolated outputs	3	3	3	3
Charging current	30 A ±10%	50 A ±10%	80 A ±5%	100 A ±5%
Charging curve	Depends on charging programme			
Boost DC1 (norm)	10 charging programmes			
Voltage share	± 2%			
Ripple	< 1%			
Fuse	2 x F25A	3 x F25A	4 x F30A	4 x F30A
Short circuit fault	In case of output overload - Output short-circuit			
Temperature fault	excessive internal or battery temperature (optional)			
Reverse polarity	faulty external temperature (optional) -			
General failure	Output over voltage - General fault			
Display	6 LEDs			
Remote panel	Octopus Panel (optional)			
Control	Microprocessor based RISC technology			
Operating/storage	0°C to +50°C / -20°C to +70°C			
Humidity	10% to 90% (without condensation)			
Electronic protection	By tropicalisation			
Ventilation	Forced fan cooling			
EMC	EN50081-1, EN50082-1, EN61000-3-2			
Security	EN60335-1			
1/2 charge	By switch on front of charger			
Paralleling	Yes			
Construction	White aluminium with powder coated treatment - blue plastic flanges			
Protection	IP22			
Mounting	Wall mounted 4 x M4 screws			
H x W x D	330x350x120	330x350x120	330x360x170	330x360x170
Weight	5.0 Kg	5.0 Kg	8.0 Kg	8.0 Kg

24v 100a



SineWave



What is an inverter?

An inverter converts the DC electricity from sources such as batteries, solar panels, or fuel cells to AC electricity. It thus transforms the power found in the battery (DC) into power (AC) that can be used safely with household appliances, like fridges, laptop computers or televisions, which require a "pure" power supply.

The new Dolphin Inverter mirrors the Dolphin Charger perfectly. The charger takes shore power and sends it to the battery in the correct (DC) format for storage. Once there is a demand for AC power, the inverter springs to life and takes the stored battery power and transforms it. There is no wastage, only the required quantity is transformed.

Pure Sine Wave

This pure sine wave inverter guarantees a safe, pure and stable power supply that will not damage AC appliances.

Parallel up to 24V 9000VA

Up to three Dolphin Inverters can be used in parallel to provide a powerful onboard appliance and connected by means of a SubD cable. One of the inverters will act as the master and the other charger(s) as slave(s) giving upto 24v 9000VA

Battery safety

The Dolphin Inverter is designed to operate with battery voltage between 19V and 33 V, meaning that it will cut off once the battery levels reach 19V and thus not discharge the batteries. Similarly, an in-built safety characteristic means that if battery levels reach 33V, the inverter will sense it and cut off. Optimal start up voltage is 22V.

A wide range of domestic appliances can be used on board thanks to the Dolphin inverter

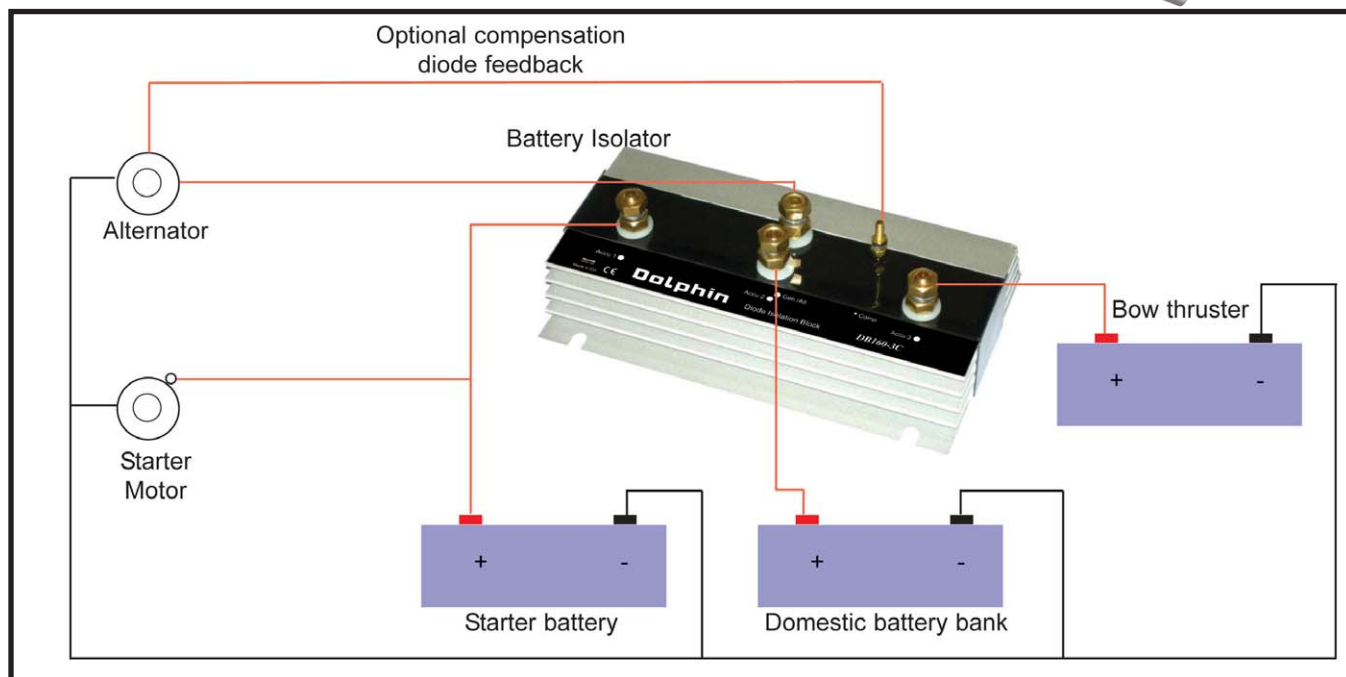


Model		24V 3000 VA
Code	299324	
Input / Battery		
Battery capacity (min.)	> 200 Ah	
Battery Voltage	21 VDC - 32 VDC	
Efficiency	80%	
Low voltage cut off	19V	
High voltage cut off	33V	
Start up voltage	22V	
Nominal consumption	120A	
Standby consumption	200mA	
Fuse	6 x 30A fast	
Output		
AC Outputs	1 (isolated)	
Max. current	230VAC	
Frequency	50Hz	
Nominal output	3000 VA (cos 0.7)	
Max. output	4500 VA	
Fuse	15A (temporised)	
Wave Form THD	<3%	
Protection		
Output circuit	Battery over or under voltage Output overload - output short circuit Excessive internal temperature faulty external temperature - over voltage - General fuse fault	
Visual Alarms	Internal inverter fault, Over current Battery voltage fault, Temperature	
Display		
LED display	6 LEDs	
Remote control	Octopus panel (optional)	
General information		
Control	Micro Processor based RISC technology	
Operating Temperature	0°C to + 50°C	
Storage Temperature	-20°C to +70°C	
Humidity	10% to 90% (without condensation)	
Convection	Forced Fan Cooling	
EMC	EN50081-1, EN50082-1	
Security	EN60335-1	
Housing		
Construction	White aluminium powder coated treatment - blue plastic flanges	
Protection	IP22	
Mounting	Wall mounted M4 screws	
Dimensions (mm) H xWxD	440x390x190	
Weight (kg)	10	
Paralleling Connection	Up to three inverters SubD9 cable & output cables in parallel Connection between inverters by SubD cables Master / slave parameters	

Dolphin DOLPHIN DIODE BATTERY ISOLATORS

Schottky diodes:

The Dolphin battery isolators feature a low voltage drop thanks to the use of Schottky diodes: at low current the voltage drop is approximately 0,3 V and at the rated output approximately 0,45V.



Battery Isolator	DB70-2C	DB90-3C	DB120-2C	DB120-3C	DB160-2C	DB160-3C
Max charge current	50 A	70 A	100 A	100 A	130 A	130 A
Max alternator current	70 A	90 A	120 A	120 A	160 A	160 A
Outputs	2	3	2	3	2	3
Connection	M6	M8	M8	M8	M8	M8
Diode Connection	M4	M4	M4	M4	M4	M4
Weight kg (lbs)	0,6 (1.3)	1,2 (2.6)	0,8 (1.8)	1,2 (2.6)	1,2 (2.6)	1,5 (3.3)
Dimensions HxWxL						
mm	60 x 120 x 80	60 x 120 x 150	60 x 120 x 100	60 x 120 x 150	60 x 120 x 150	60 x 120 x 200
inches	2.4 x 4.7 x 3.2	2.4 x 4.7 x 6.0	2.4 x 4.7 x 3.9	2.4 x 4.7 x 6.0	2.4 x 4.7 x 6.0	2.4 x 4.7 x 7.0
Code Reya	512000	512001	512002	512003	512004	512005

VISION 4 BATTERY MONITOR

General information:

The VISION 4 Battery Supervisor is the last word in on board power supervision. At the touch of a button you will be able to monitor a host of important information.

It is simple to connect and it automatically detects the input voltage (12 VDC or 24 VDC). CanBus SAE J1939 interface.

The VISION 4 battery monitor analyses battery voltage, battery efficiency, temperature and capacity on 2 battery banks (by means of an optional second shunt) also the voltage on 2 additional banks.

The VISION 4 includes a digital filter which allows it to avoid problems arising from motor start up, fuse faults, unballasting, etc...

The VISION 4 has a non volatile memory which allows it to retain configuration parameters even if there is no power source.

The VISION 4 has powerful calculating algorithms which take count of the current draw, the charge status and the type of battery, so it can supply precise indication of the remaining charge. This means that the VISION 4 is more than just a simple Ah counter. In fact, its energy counter takes into consideration:

-During the charge, output that diminishes according to the battery's charge.

-During the discharge, restored capacity which diminishes according to the draw.

What's more, the VISION 4 is not sensitive to the effects of the charging cycle because it automatically detects float mode. It is thus not subject to drifting with each successive charge / discharge cycle.

Reya is proud to introduce the most advanced and yet most user friendly battery supervisor available on the market today. Readings are more visible than ever before thanks to the OLED display.

Armed with accurate battery information you can make informed decisions about when to stop or start charging - no longer will you be subject to unexpected flat batteries!

Being remote from the actual unit means that it easily slots into existing wiring keeping installation quick and easy. Flush fitted with a diameter of Ø 52 mm, the VISION 4 is part of the Dolphin family of products.

It is equipped with a numerous alarms and a cycle counter and a CAN BUS SAE J1939 interface.



Power supply characteristics:

Voltage:	10-30 VDC
Consumption:	10 mA approx. ("normal" mode). 30 mA approx. ("alarm" mode).

Display functions:

Display type:	Graphic OLED display 4 lines.
Parameter selection:	5 way navigation keypad

Parameters displayed:

Batteries 1 & 2:	Voltage, Current, Temperature & capacity.
Batteries 3 & 4:	Voltage.

Faults detected:

Batteries 1 & 2:	Battery undervoltage (adjustable), Battery overvoltage, Excessive temperature, Low capacity.
-----------------------------	---

Batteries 3 & 4:	Battery undervoltage (adjustable), Battery overvoltage,
-----------------------------	--

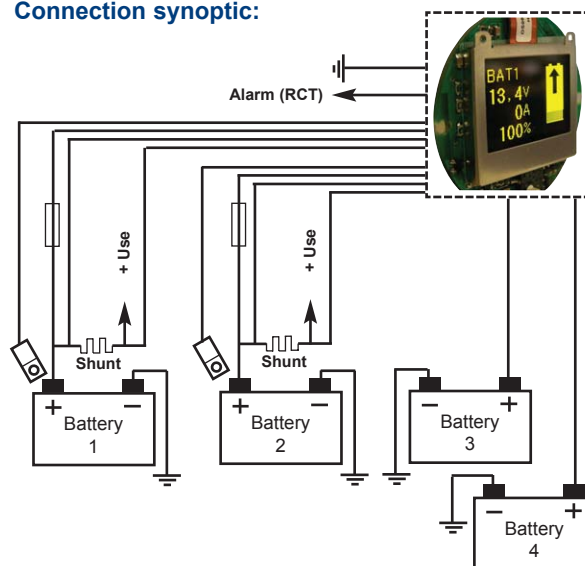
Alarm output: Dry loop, 1 inv - 1 Amp max.

Temperature sensor:	1 electric sensor
Shunt:	1 shunt 300 Amps/100 mV.

Temperature sensor:	Code 299405
Shunt 150 Amps/100 mV:	Code 299402
Shunt 300 Amps/100 mV:	Code 299403
Shunt 500 Amps/100 mV:	Code 299404
Delayed fuse 100mA:	Code 039715

Capacity	Voltage	Reference	Code
10 - 5000 Ah	12/24V	VISION4-5000A	299032

Connection synoptic:



Security:	Delayed fuse 100mA on +.
Operating /Stockage:	-10°C - +50°C / -20°C - +70°C.
Convection:	Natural.
Presentation:	Flush mounted Ø52 mm
W x H x D:	70 x 70 x 32 mm.
Weight:	< 500g
Connection:	2 screw terminals



2599 Route de la Fenerie
06580 Pegomas, FRANCE

Tel.: 00 33 (0) 493 904 700
Fax: 00 33 (0) 493 902 440

Email: export@reya.com
www.reya.com